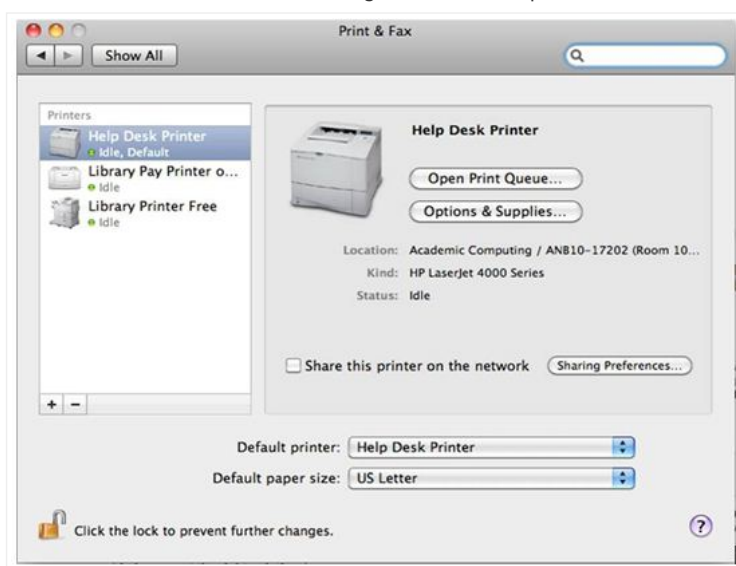


Aron Hall Laptop Printing - Mac

[Follow](#)

Installing ISMMS Aron Hall Printer on MAC OS

1. Go to Apple Menu > Systems Preferences > Printers & Scanners.
2. To add a new printer, click on the plus sign (+) located below the Printers box on the left side. The Add Printer dialog box will come up.

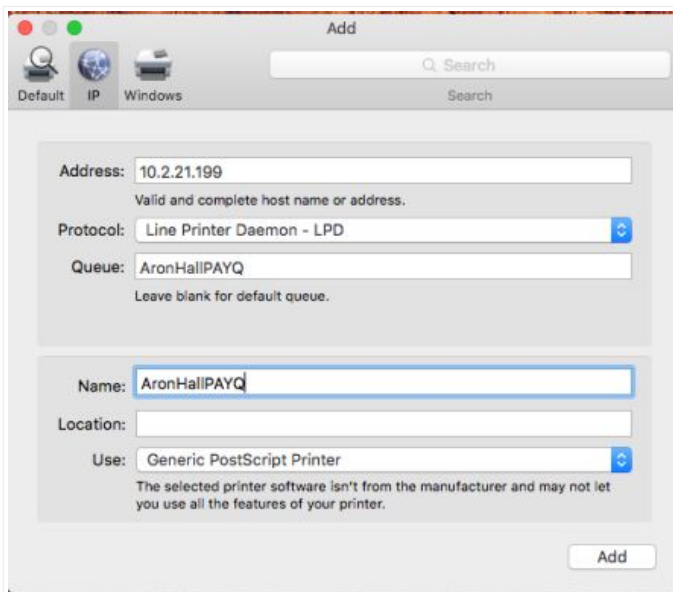


3. Once the Add Printer dialog comes up, click on the IP button on the main menu.
4. At the IP dialog box, enter the following information:

- Leave **Protocol** as **Line Printer Daemon - LPD**.
- **Address:**10.2.21.199
- **Queue:**AronHallPAYQ
- **Print Using:** Generic PostScript Printer

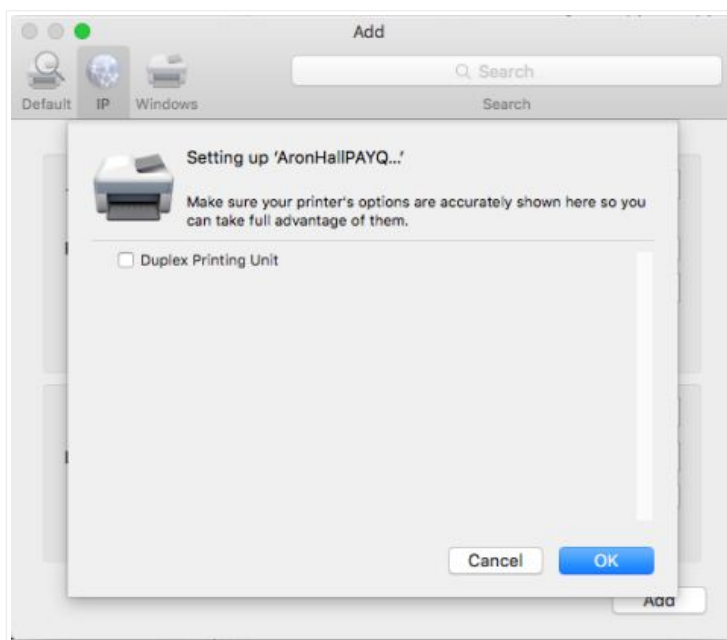
RELATED ARTICLES

[Aron Hall Laptop Printing - Windows](#)
[Faculty Mailman List Request Form](#)
[Blackboard Faculty Account Request](#)
[Software Requests](#)
[Electronic Resources Access Problem](#)



5. Click **Add**.

6. On the Installable Options dialog box; just click Continue to go on to the next window.



7. Click **Ok**.

Have more questions? [Submit a request](#)

Was this article helpful?



1 out of 1 found this helpful

Our Location

1 Gustave L. Levy Place
New York, NY 10029-5674

Contact ASCIT

212-241-7091
ascit@mssm.edu

Support Hours

Mon-Fri 8:00 am - 8:00 pm
Sat 8:00 am - 9:00 pm

