

## Aron Hall Laptop Printing - Windows

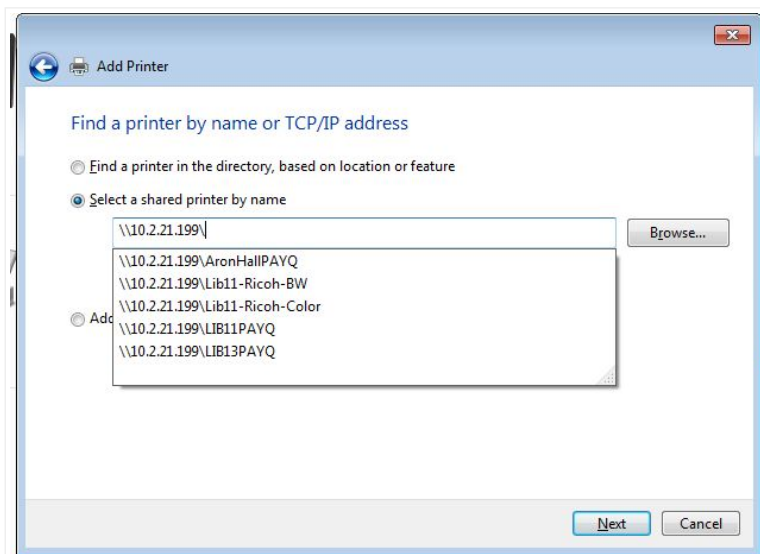
[Follow](#)

### Installing ISMMS Aron Hall Printer on Windows Workstations

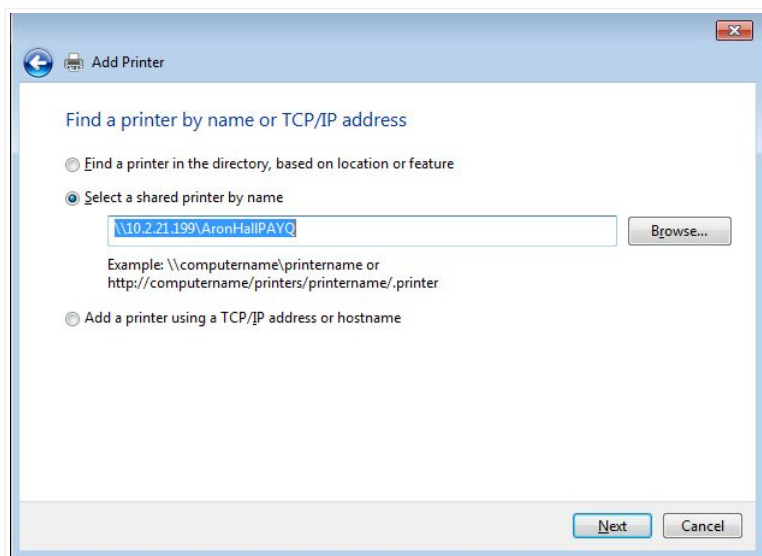
### RECENTLY VIEWED ARTICLES

[Aron Hall Laptop Printing - Mac](#)

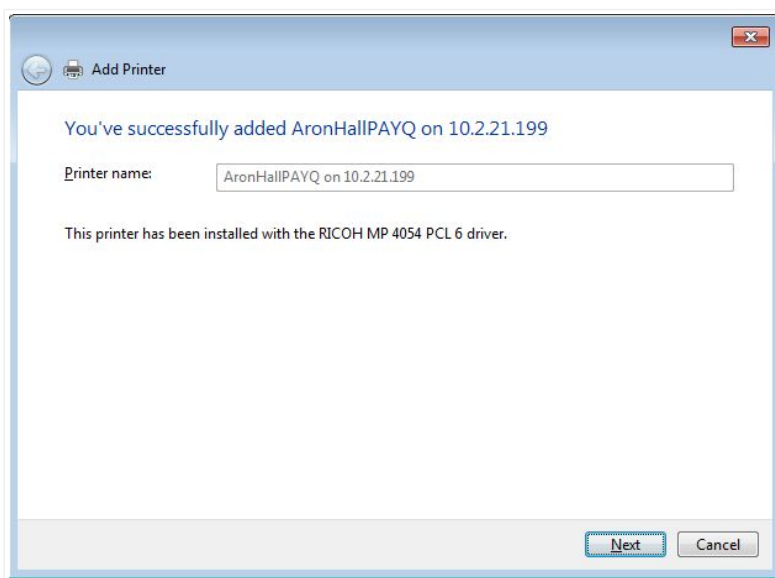
1. Open the printers folder via the **Start** menu or from within the **Control Panel**.
2. Click on the **Add a printer** button.
3. When the Add Printer dialog box comes up, click on **Add a network,wireless or Bluetooth printer**.
4. To install the Aaron Hall printer, click on the "**The printer that I want isn't listed**" button.
5. Once the **Find a printer by name or TCP/IP address** dialog box comes up, select the radio button **select a shared printer by name** and type the Pharos printer IP address. **Click Next**.



Once you type: \\10.2.21.199\\, this will open a choose box, double-click on:



Once you select the AronHallPayQ printer from the list, **Printer Name** field will be grayed out and already filled in. Click **Next**.



6. Once you click on next, you will have added the Aron Hall school printer to use. Click **Next**, then **Finish**.

Have more questions? [Submit a request](#)

Was this article helpful?



0 out of 0 found this helpful

#### Our Location

1 Gustave L. Levy Place  
New York, NY 10029-5674

#### Contact ASCIT

212-241-7091  
ascit@mssm.edu

#### Support Hours

Mon-Fri 8:00 am - 8:00 pm  
Sat 8:00 am - 9:00 pm  
Sun 12:00 pm - 8:00 pm

